



VEOLIA ENVIRONMENTAL SERVICES (UK) PLC

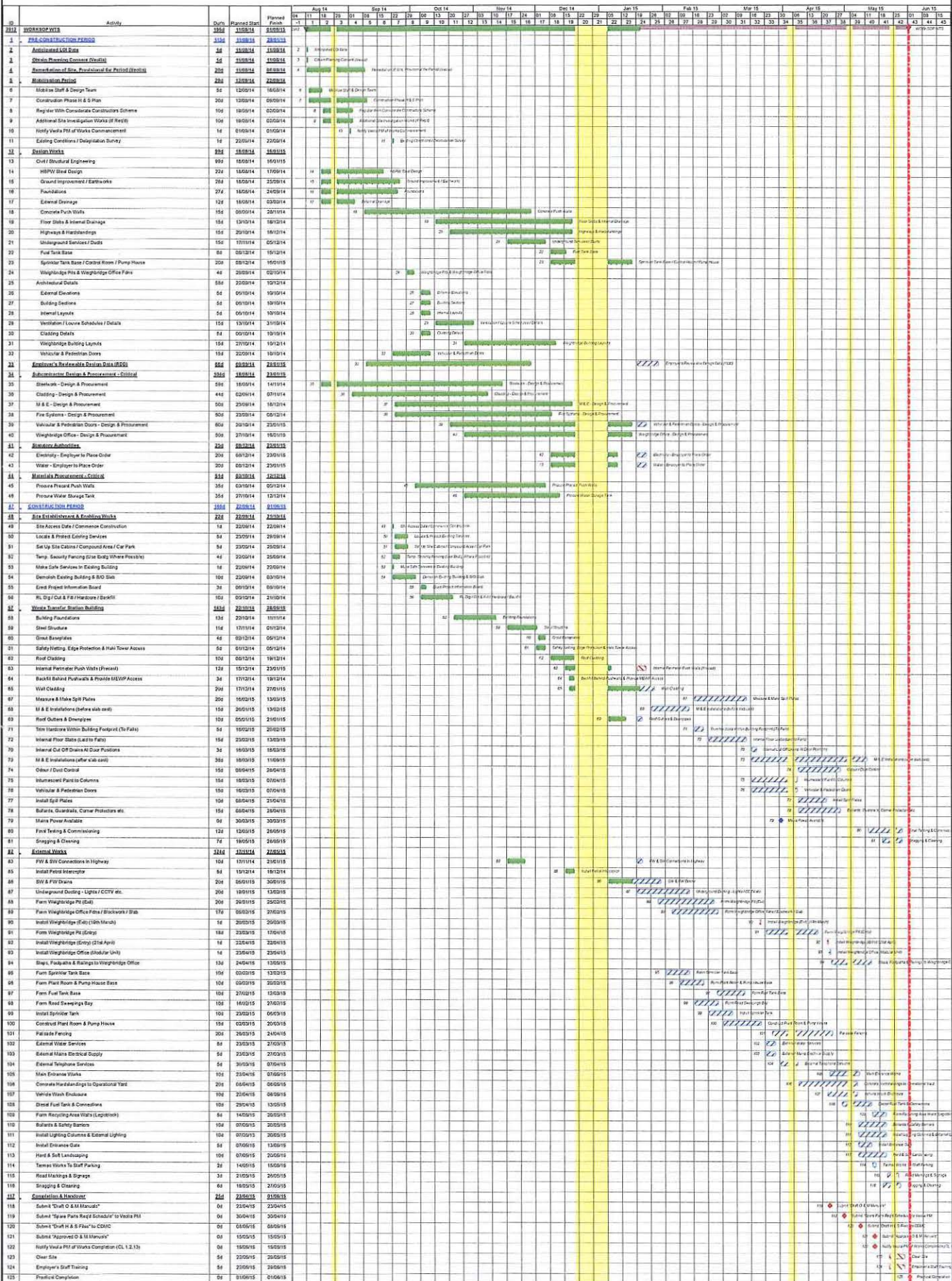
Progress Programme 14th January 2015

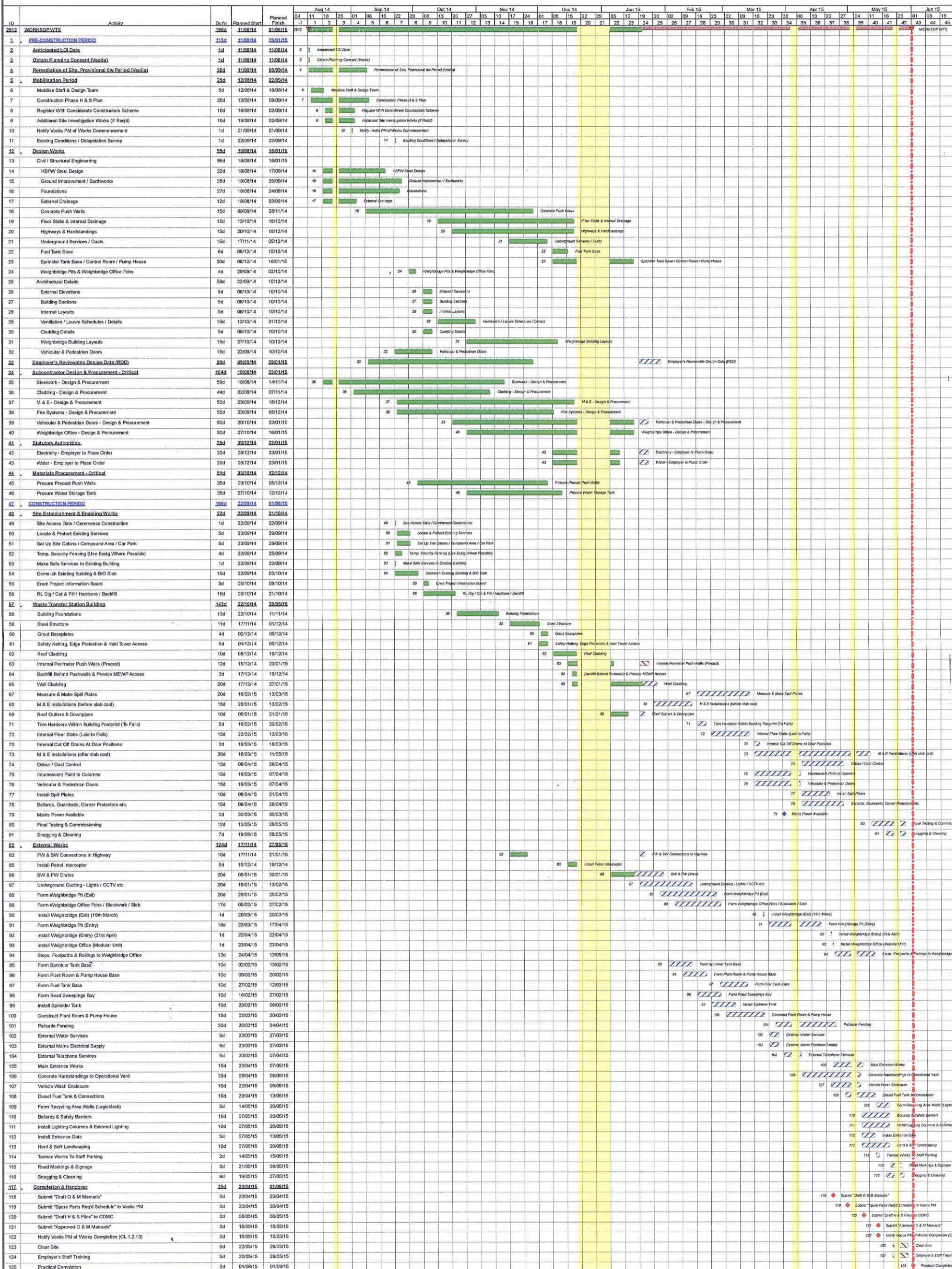
NEW WASTE TRANSFER STATION AT WORKSOP

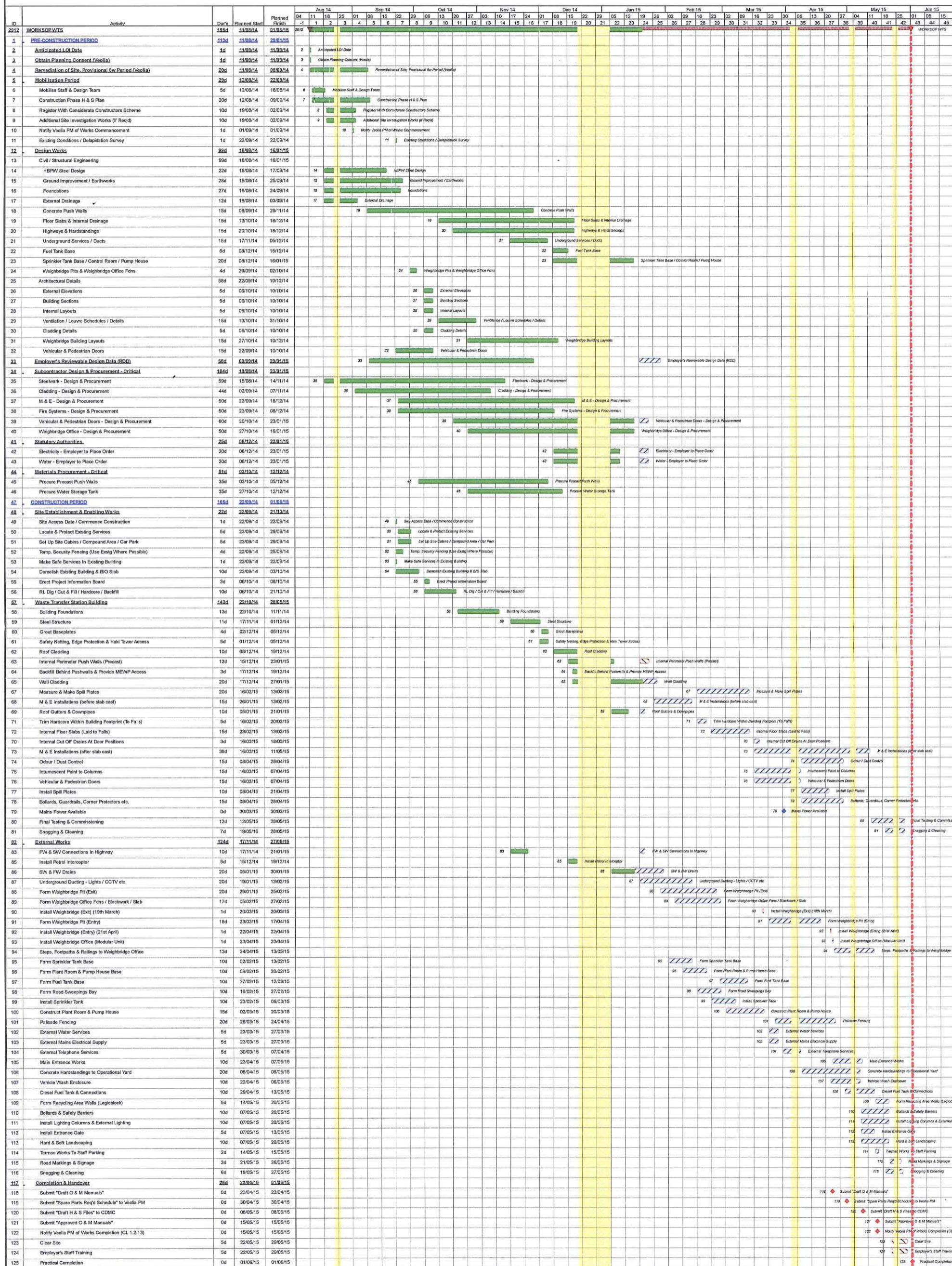
ID	Activity	Start	Planned Start	Planned End	Actual End	Notes
1111	WORKSOP SITE	13/05/14	13/05/14	01/06/15		
1	Final Design/Construction	13/05/14	13/05/14	01/06/15		
2	Established L2 Data	13/05/14	13/05/14	01/06/15		
3	Urban Planning Consent (Initial)	13/05/14	13/05/14	01/06/15		
4	Remediation of Site, Procurement for Fenced/Retained	13/05/14	13/05/14	01/06/15		
5	Remediation of Site, Procurement for Fenced/Retained	13/05/14	13/05/14	01/06/15		
6	Mobilisation Period	13/05/14	13/05/14	22/06/14		
7	Mobilisation Staff & Design Team	13/05/14	13/05/14	15/09/14		
8	Construct Phase H & S Plan	13/05/14	13/05/14	06/09/14		
9	Register With Conscientious Contractors Scheme	13/05/14	13/05/14	02/09/14		
10	Additional Site Investigation Works (if Req'd)	13/05/14	13/05/14	02/09/14		
11	Notify Verba PFI of Works Commencement	13/05/14	13/05/14	01/09/14		
12	Ecology Conditions / Deposition Survey	13/05/14	13/05/14	22/09/14		
13	Final Works	13/05/14	13/05/14	15/01/15		
14	Civil / Structural Engineering	13/05/14	13/05/14	15/01/15		
15	HRW Steel Design	13/05/14	13/05/14	17/09/14		
16	Ground Improvement / Earthworks	13/05/14	13/05/14	25/09/14		
17	Foundations	13/05/14	13/05/14	24/09/14		
18	External Drainage	13/05/14	13/05/14	03/10/14		
19	Concrete Push Walls	13/05/14	13/05/14	20/11/14		
20	Floor Slabs & Internal Drainage	13/05/14	13/05/14	15/12/14		
21	Highways & Handdrainings	13/05/14	13/05/14	15/12/14		
22	Underground Services / Ducts	13/05/14	13/05/14	05/12/14		
23	Fuel Tank Base	13/05/14	13/05/14	15/12/14		
24	Separator Tank Base / Control Room / Pump House	13/05/14	13/05/14	15/12/14		
25	Weightbridge Pit & Weightbridge Office Fibre	13/05/14	13/05/14	02/10/14		
26	Architectural Details	13/05/14	13/05/14	10/12/14		
27	External Elevations	13/05/14	13/05/14	10/10/14		
28	Building Sections	13/05/14	13/05/14	10/10/14		
29	Internal Layouts	13/05/14	13/05/14	10/10/14		
30	Verification / Liaise Schedules / Details	13/05/14	13/05/14	31/10/14		
31	Checking Details	13/05/14	13/05/14	10/10/14		
32	Weightbridge Building Layouts	13/05/14	13/05/14	10/10/14		
33	Vehicle & Pedestrian Doors	13/05/14	13/05/14	10/10/14		
34	Remediation of Existing Buildings (ASOP)	13/05/14	13/05/14	23/10/14		
35	Subsidiary Design & Procurement - Civil	13/05/14	13/05/14	23/10/14		
36	Subsidiary Design & Procurement	13/05/14	13/05/14	14/11/14		
37	Cladding - Design & Procurement	13/05/14	13/05/14	07/11/14		
38	M & E - Design & Procurement	13/05/14	13/05/14	15/12/14		
39	Fire Systems - Design & Procurement	13/05/14	13/05/14	09/12/14		
40	Vehicle & Pedestrian Doors - Design & Procurement	13/05/14	13/05/14	29/11/14		
41	Weightbridge Office - Design & Procurement	13/05/14	13/05/14	15/01/15		
42	Weightbridge Office - Design & Procurement	13/05/14	13/05/14	23/10/14		
43	Weightbridge Office - Design & Procurement	13/05/14	13/05/14	23/10/14		
44	Weightbridge Office - Design & Procurement	13/05/14	13/05/14	23/10/14		
45	Weightbridge Office - Design & Procurement	13/05/14	13/05/14	23/10/14		
46	Weightbridge Office - Design & Procurement	13/05/14	13/05/14	23/10/14		
47	Weightbridge Office - Design & Procurement	13/05/14	13/05/14	23/10/14		
48	Weightbridge Office - Design & Procurement	13/05/14	13/05/14	23/10/14		
49	Weightbridge Office - Design & Procurement	13/05/14	13/05/14	23/10/14		
50	Weightbridge Office - Design & Procurement	13/05/14	13/05/14	23/10/14		
51	Weightbridge Office - Design & Procurement	13/05/14	13/05/14	23/10/14		
52	Weightbridge Office - Design & Procurement	13/05/14	13/05/14	23/10/14		
53	Weightbridge Office - Design & Procurement	13/05/14	13/05/14	23/10/14		
54	Weightbridge Office - Design & Procurement	13/05/14	13/05/14	23/10/14		
55	Weightbridge Office - Design & Procurement	13/05/14	13/05/14	23/10/14		
56	Weightbridge Office - Design & Procurement	13/05/14	13/05/14	23/10/14		
57	Weightbridge Office - Design & Procurement	13/05/14	13/05/14	23/10/14		
58	Weightbridge Office - Design & Procurement	13/05/14	13/05/14	23/10/14		
59	Weightbridge Office - Design & Procurement	13/05/14	13/05/14	23/10/14		
60	Weightbridge Office - Design & Procurement	13/05/14	13/05/14	23/10/14		
61	Weightbridge Office - Design & Procurement	13/05/14	13/05/14	23/10/14		
62	Weightbridge Office - Design & Procurement	13/05/14	13/05/14	23/10/14		
63	Weightbridge Office - Design & Procurement	13/05/14	13/05/14	23/10/14		
64	Weightbridge Office - Design & Procurement	13/05/14	13/05/14	23/10/14		
65	Weightbridge Office - Design & Procurement	13/05/14	13/05/14	23/10/14		
66	Weightbridge Office - Design & Procurement	13/05/14	13/05/14	23/10/14		
67	Weightbridge Office - Design & Procurement	13/05/14	13/05/14	23/10/14		
68	Weightbridge Office - Design & Procurement	13/05/14	13/05/14	23/10/14		
69	Weightbridge Office - Design & Procurement	13/05/14	13/05/14	23/10/14		
70	Weightbridge Office - Design & Procurement	13/05/14	13/05/14	23/10/14		
71	Weightbridge Office - Design & Procurement	13/05/14	13/05/14	23/10/14		
72	Weightbridge Office - Design & Procurement	13/05/14	13/05/14	23/10/14		
73	Weightbridge Office - Design & Procurement	13/05/14	13/05/14	23/10/14		
74	Weightbridge Office - Design & Procurement	13/05/14	13/05/14	23/10/14		
75	Weightbridge Office - Design & Procurement	13/05/14	13/05/14	23/10/14		
76	Weightbridge Office - Design & Procurement	13/05/14	13/05/14	23/10/14		
77	Weightbridge Office - Design & Procurement	13/05/14	13/05/14	23/10/14		
78	Weightbridge Office - Design & Procurement	13/05/14	13/05/14	23/10/14		
79	Weightbridge Office - Design & Procurement	13/05/14	13/05/14	23/10/14		
80	Weightbridge Office - Design & Procurement	13/05/14	13/05/14	23/10/14		
81	Weightbridge Office - Design & Procurement	13/05/14	13/05/14	23/10/14		
82	Weightbridge Office - Design & Procurement	13/05/14	13/05/14	23/10/14		
83	Weightbridge Office - Design & Procurement	13/05/14	13/05/14	23/10/14		
84	Weightbridge Office - Design & Procurement	13/05/14	13/05/14	23/10/14		
85	Weightbridge Office - Design & Procurement	13/05/14	13/05/14	23/10/14		
86	Weightbridge Office - Design & Procurement	13/05/14	13/05/14	23/10/14		
87	Weightbridge Office - Design & Procurement	13/05/14	13/05/14	23/10/14		
88	Weightbridge Office - Design & Procurement	13/05/14	13/05/14	23/10/14		
89	Weightbridge Office - Design & Procurement	13/05/14	13/05/14	23/10/14		
90	Weightbridge Office - Design & Procurement	13/05/14	13/05/14	23/10/14		
91	Weightbridge Office - Design & Procurement	13/05/14	13/05/14	23/10/14		
92	Weightbridge Office - Design & Procurement	13/05/14	13/05/14	23/10/14		
93	Weightbridge Office - Design & Procurement	13/05/14	13/05/14	23/10/14		
94	Weightbridge Office - Design & Procurement	13/05/14	13/05/14	23/10/14		
95	Weightbridge Office - Design & Procurement	13/05/14	13/05/14	23/10/14		
96	Weightbridge Office - Design & Procurement	13/05/14	13/05/14	23/10/14		
97	Weightbridge Office - Design & Procurement	13/05/14	13/05/14	23/10/14		
98	Weightbridge Office - Design & Procurement	13/05/14	13/05/14	23/10/14		
99	Weightbridge Office - Design & Procurement	13/05/14	13/05/14	23/10/14		
100	Weightbridge Office - Design & Procurement	13/05/14	13/05/14	23/10/14		
101	Weightbridge Office - Design & Procurement	13/05/14	13/05/14	23/10/14		
102	Weightbridge Office - Design & Procurement	13/05/14	13/05/14	23/10/14		
103	Weightbridge Office - Design & Procurement	13/05/14	13/05/14	23/10/14		
104	Weightbridge Office - Design & Procurement	13/05/14	13/05/14	23/10/14		
105	Weightbridge Office - Design & Procurement	13/05/14	13/05/14	23/10/14		
106	Weightbridge Office - Design & Procurement	13/05/14	13/05/14	23/10/14		
107	Weightbridge Office - Design & Procurement	13/05/14	13/05/14	23/10/14		
108	Weightbridge Office - Design & Procurement	13/05/14	13/05/14	23/10/14		
109	Weightbridge Office - Design & Procurement	13/05/14	13/05/14	23/10/14		
110	Weightbridge Office - Design & Procurement	13/05/14	13/05/14	23/10/14		
111	Weightbridge Office - Design & Procurement	13/05/14	13/05/14	23/10/14		
112	Weightbridge Office - Design & Procurement	13/05/14	13/05/14	23/10/14		
113	Weightbridge Office - Design & Procurement	13/05/14	13/05/14	23/10/14		
114	Weightbridge Office - Design & Procurement	13/05/14	13/05/14	23/10/14		
115	Weightbridge Office - Design & Procurement	13/05/14	13/05/14	23/10/14		
116	Weightbridge Office - Design & Procurement	13/05/14	13/05/14	23/10/14		
117	Weightbridge Office - Design & Procurement	13/05/14	13/05/14	23/10/14		
118	Weightbridge Office - Design & Procurement	13/05/14	13/05/14	23/10/14		
119	Weightbridge Office - Design & Procurement	13/05/14	13/05/14	23/10/14		
120	Weightbridge Office - Design & Procurement	13/05/14	13/05/14	23/10/14		
121	Weightbridge Office - Design & Procurement	13/05/14	13/05/14	23/10/14		
122	Weightbridge Office - Design & Procurement	13/05/14	13/05/14	23/10/14		
123	Weightbridge Office - Design & Procurement	13/05/14	13/05/14	23/10/14		
124	Weightbridge Office - Design & Procurement	13/05/14	13/05/14	23/10/14		
125	Weightbridge Office - Design & Procurement	13/05/14	13/05/14	23/10/14		

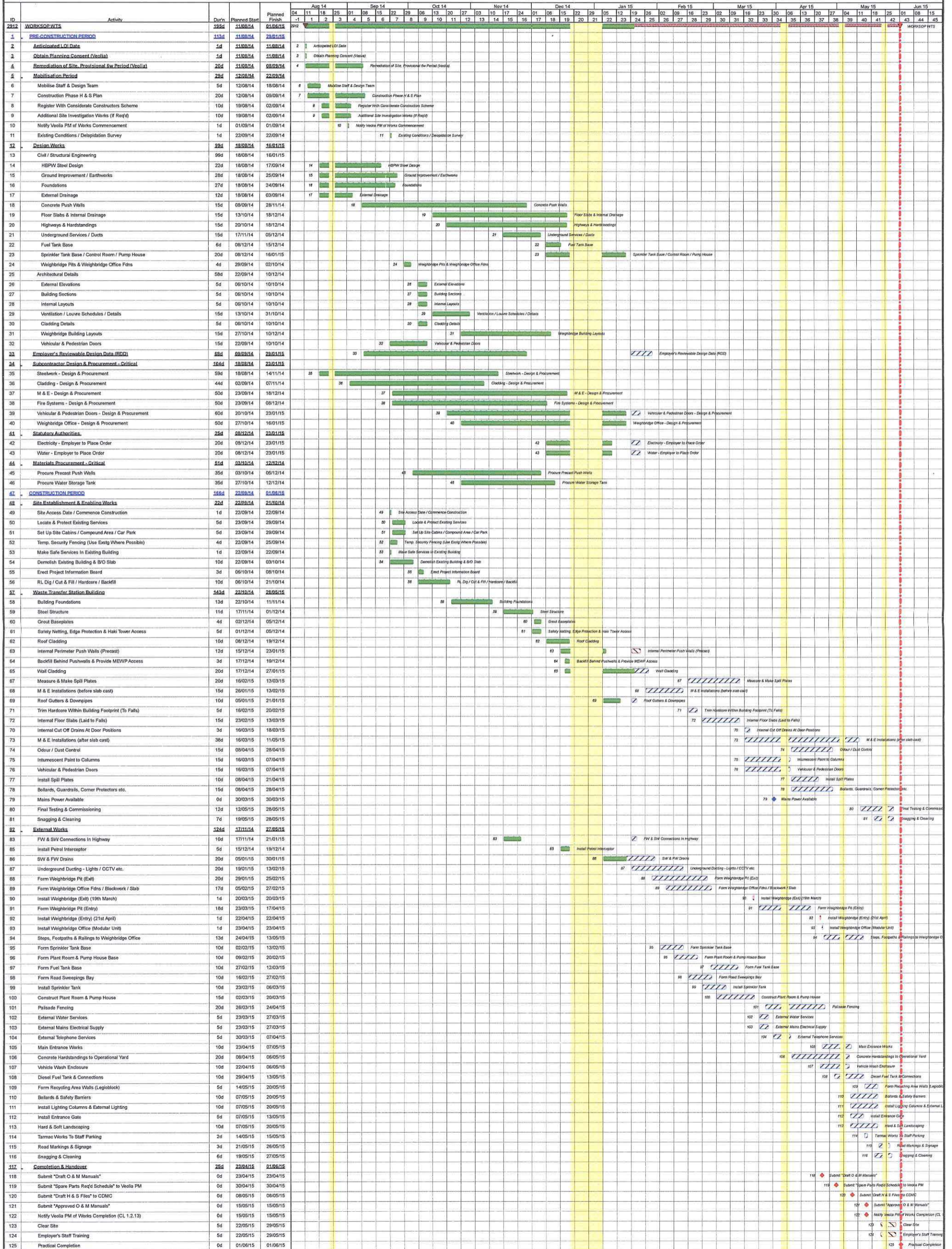


VEOLIA ENVIRONMENTAL SERVICES (UK) PLC Progress Programme 14th January 2015 NEW WASTE TRANSFER STATION AT WORKSOP



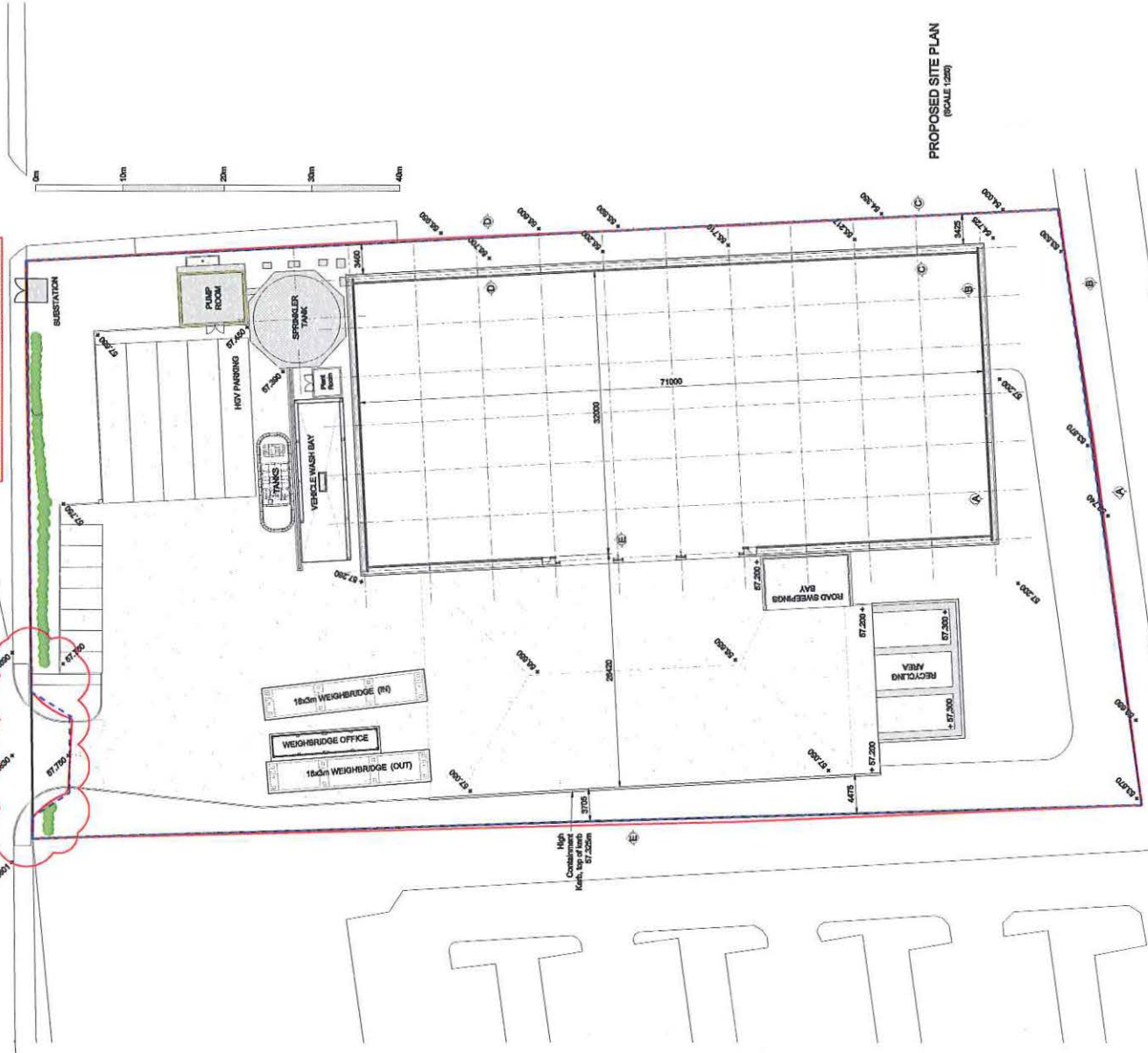






PROPOSED WORKS TO SITE ENTRANCE TO BE SUBJECT TO S278 AGREEMENT. ALL WORKS TO BE IN ACCORDANCE WITH NOTTINGHAMSHIRE COUNTY COUNCIL APPROVAL AND THE REFER TO HBPW DRAWINGS BLUS4302 & 3M FOR DETAILS

CLAYLANDS AVENUE



1. DO NOT SCALE
2. This drawing is to be read in conjunction with all other relevant drawings.
3. Should there be any conflict between the details indicated on this drawing and those indicated on any other drawing, the details on this drawing shall prevail.
4. Use of technical approval has been obtained from the relevant authority. It should be understood that all works shown on this drawing are to be carried out in accordance with the relevant standards and specifications. It is NOT FOR CONSTRUCTION. Should the contractor commence site work prior to approval being given, it is at their own risk.
5. All dimensions are in millimetres unless otherwise stated.
6. The responsibility of the contractor to maintain the works at all times in strict accordance with the requirements of the Health and Safety at Work Act 1974 and the relevant regulations. The contractor shall be deemed to have allowed for full compliance, including full liaison with the CDM co-ordinator, within the limits.

It is assumed that all works will be carried out by a competent contractor, to the satisfaction of the approved method statement.

Work Package	Start Date	End Date	Phase
Site Preparation	15/01/14	31/01/14	PP
Excavation	01/02/14	15/02/14	PP
Foundation	16/02/14	28/02/14	PP
Structure	01/03/14	15/03/14	PP
Roofing	16/03/14	30/03/14	PP
Internal Fit-out	01/04/14	15/04/14	PP
External Works	16/04/14	30/04/14	PP
Final Handover	01/05/14	15/05/14	PP

43, Boulevard
 5027 7th
 Houston, TX 77056
 Tel: (817) 777 8999
 Fax: (817) 777 8041

HBPW
LLP
 Civil & Structural Engineering Services

VEOLIA
 ENVIRONMENTAL
 SERVICES

Clugston

PROJECT: **VEOLIA WORKSOP**
 NAME: **VEOLIA WORKSOP**
 LOCATION: **DUBBERS HOUSE, CLAYLANDS AVE**

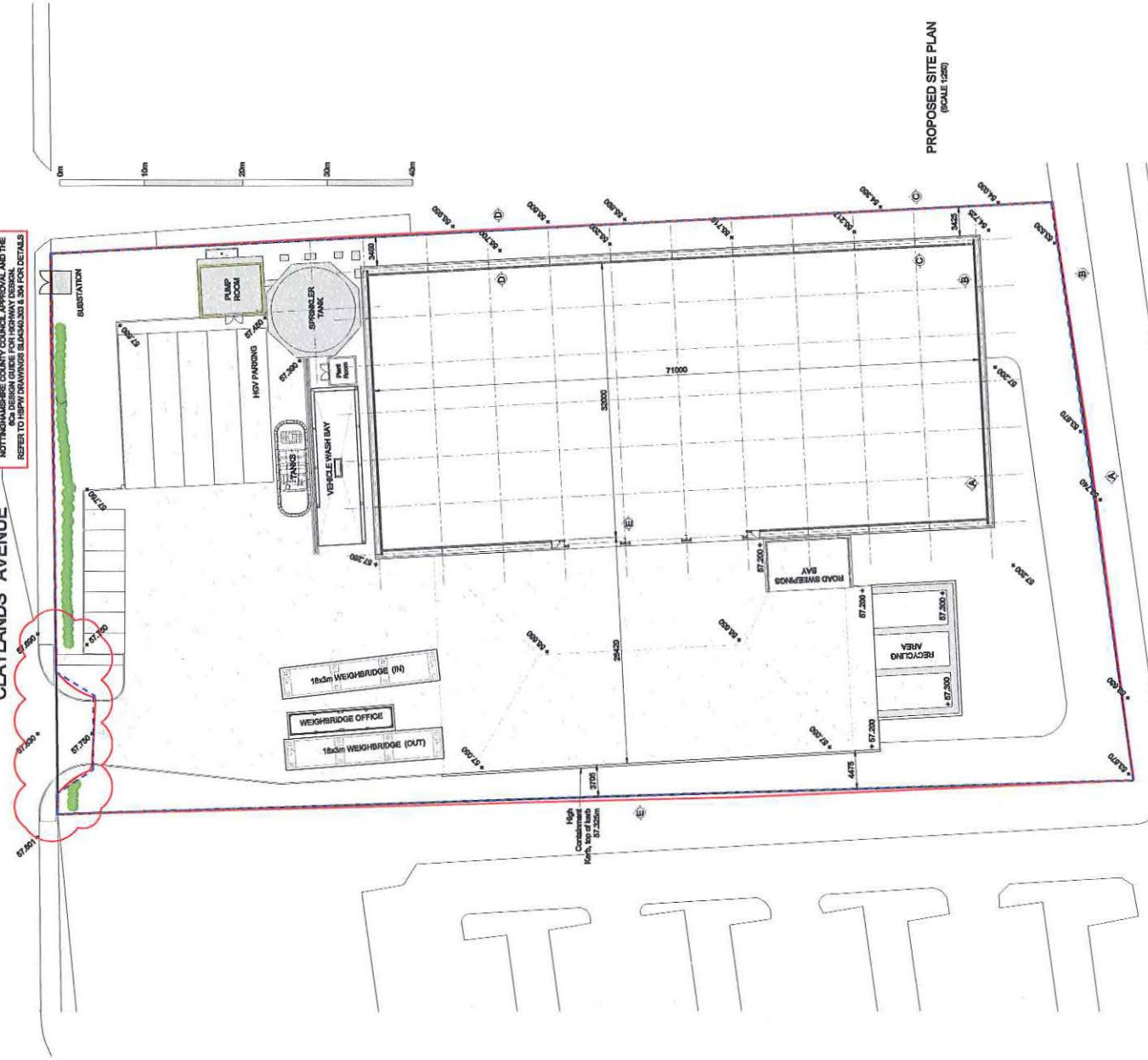
DRAWING TITLE: **PROPOSED SITE LAYOUT**

DRAWN	EP	DATE
PROJECT	EP	AUGUST 2014
CHECKED	PM	SCALE
APPROVED	PW	AS SHOWN @ A1

DRAWING NUMBER: **BLUS4302.300** REVISION: **1**

PROPOSED WORKS TO SITE ENTRANCE TO BE SUBJECT TO S273 AGREEMENT. ALL WORKS TO BE IN ACCORDANCE WITH NOTTINGHAMSHIRE COUNTY COUNCIL HIGHWAY DESIGN AND THE 400 DESIGN GUIDE FOR HIGHWAY DESIGN. REFER TO HBPW DRAWINGS BLA0340.300 & 301 FOR DETAILS

CLAYLANDS AVENUE



PROPOSED SITE PLAN (SCALE 1:500)

1. DO NOT SCALE
2. This drawing is to be read in conjunction with all other relevant drawings.
3. Should there be any conflict between the details shown on this drawing and any other drawings, the details on this drawing shall prevail unless otherwise stated.
4. Until technical approval has been obtained from the relevant Authority, it should be understood that all works shown on this drawing are for information only and NOT FOR CONSTRUCTION. Should the contractor wish to proceed with any work shown on this drawing, it is essential that they obtain approval from the relevant Authority in writing.
5. All dimensions are in millimetres unless otherwise stated.
6. It is the responsibility of the contractor to ensure the works are carried out in strict accordance with the drawings and specifications. The contractor shall be deemed to have allowed for full compliance with the drawings and specifications. It is the contractor's responsibility to liaise with the CCN co-ordinator, within the scheme.

It is intended that all works will be carried out by a competent contractor working, where appropriate, to an approved method statement.

DESCRIPTION	DATE	BY	CHKD	APP
Preparation of drawings	12/01/20	EP	EP	EP
Issue for construction	12/01/20	EP	EP	EP
Revision 1	12/01/20	EP	EP	EP
Revision 2	12/01/20	EP	EP	EP
Revision 3	12/01/20	EP	EP	EP
Revision 4	12/01/20	EP	EP	EP
Revision 5	12/01/20	EP	EP	EP
Revision 6	12/01/20	EP	EP	EP
Revision 7	12/01/20	EP	EP	EP
Revision 8	12/01/20	EP	EP	EP
Revision 9	12/01/20	EP	EP	EP
Revision 10	12/01/20	EP	EP	EP
Revision 11	12/01/20	EP	EP	EP
Revision 12	12/01/20	EP	EP	EP
Revision 13	12/01/20	EP	EP	EP
Revision 14	12/01/20	EP	EP	EP
Revision 15	12/01/20	EP	EP	EP
Revision 16	12/01/20	EP	EP	EP
Revision 17	12/01/20	EP	EP	EP
Revision 18	12/01/20	EP	EP	EP
Revision 19	12/01/20	EP	EP	EP
Revision 20	12/01/20	EP	EP	EP

43 Broomfield
Nottinghamshire
NG22 7UN
Tel: 01773 888888
Fax: 01773 888888
018 & Structural Engineering Services
Tel: 01773 888888
Fax: 01773 888888

HBPW
LLP
018 & Structural Engineering Services
Tel: 01773 888888
Fax: 01773 888888

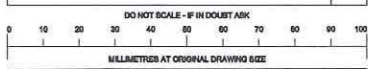
VEOLIA
WATER
SERVICES

Clugston

PROJECT
VEOLIA WORKSOP
NAME : VEOLIA WORKSOP
LOCATION : DUNESIDE HOUSE, CLAYLANDS AVE

DRAWING TITLE
PROPOSED SITE LAYOUT

DRAWN	EP	DATE	AUGUST 2014
CHECKED	EP	SCALE	AS SHOWN @ A1
APPROVED	PV	DRAWING NUMBER	BLA0340.300
REVISION			1



1. DO NOT SCALE
2. This drawing is to be read in conjunction with all other relevant drawings.
3. Should there be any conflict between the details indicated on this drawing and those indicated on other drawings the Engineer should be informed PRIOR to construction on site.
4. Until technical approval has been obtained from the relevant Authority, it should be understood that all drawings and details issued are PRELIMINARY and NOT FOR CONSTRUCTION. Should the contractor commence site work prior to approval being given, it is entirely at his own risk.
5. All dimensions are in millimetres unless otherwise stated.
6. It is the responsibility of the contractor to execute the works at all times in strict accordance with the requirements of the Health And Safety At Work Act 1974 and CDM regulations 2007. The contractor will be deemed to have allowed for full compliance, including full liaison with the CDM co-ordinator, within his rates.

It is assumed that all works will be carried out by a competent contractor working, where appropriate, to an approved method statement

DESCRIPTION	REV	DATE	BY	CHKD	APPR
Weightbridge setting out updated, Vehicle wash adjusted	I	23.01.15	BS	EP	PW
Site Layout Adjusted, Tank Island adjusted	H	12.01.15	BS	EP	PW
Position and size of sprinkler tank, pump room confirmed	G	08.01.15	BS	EP	PW
Vehicle wash bay updated and boundary substation added	F	10.11.14	BS	EP	PW
Section E-E, weightbridge relocated & Levels updated	F	10.11.14	BS	EP	PW
Trial kerb & Section E-E added	E	20.09.14	BS	EP	PW
Additional proposed levels added, width of path increased	D	18.09.14	BS	EP	PW
Additional proposed levels added, width of path increased	C	18.09.14	BS	EP	PW
Additional levels added, building rotated on plan	B	18.09.14	BS	EP	PW
Note added showing extent of Highway works	A	27.03.14	EP	PW	EP

HBPW
LLP
Civil & Structural Engineering Services

43 Bridgegate
Retford
Nottinghamshire
DN22 7UX
Tel: (01777) 869806
Fax: (01777) 862491

STATUS APPROVAL

CLIENT **VEOLIA ENVIRONMENTAL SERVICES**

CONTRACTOR **Clugston**

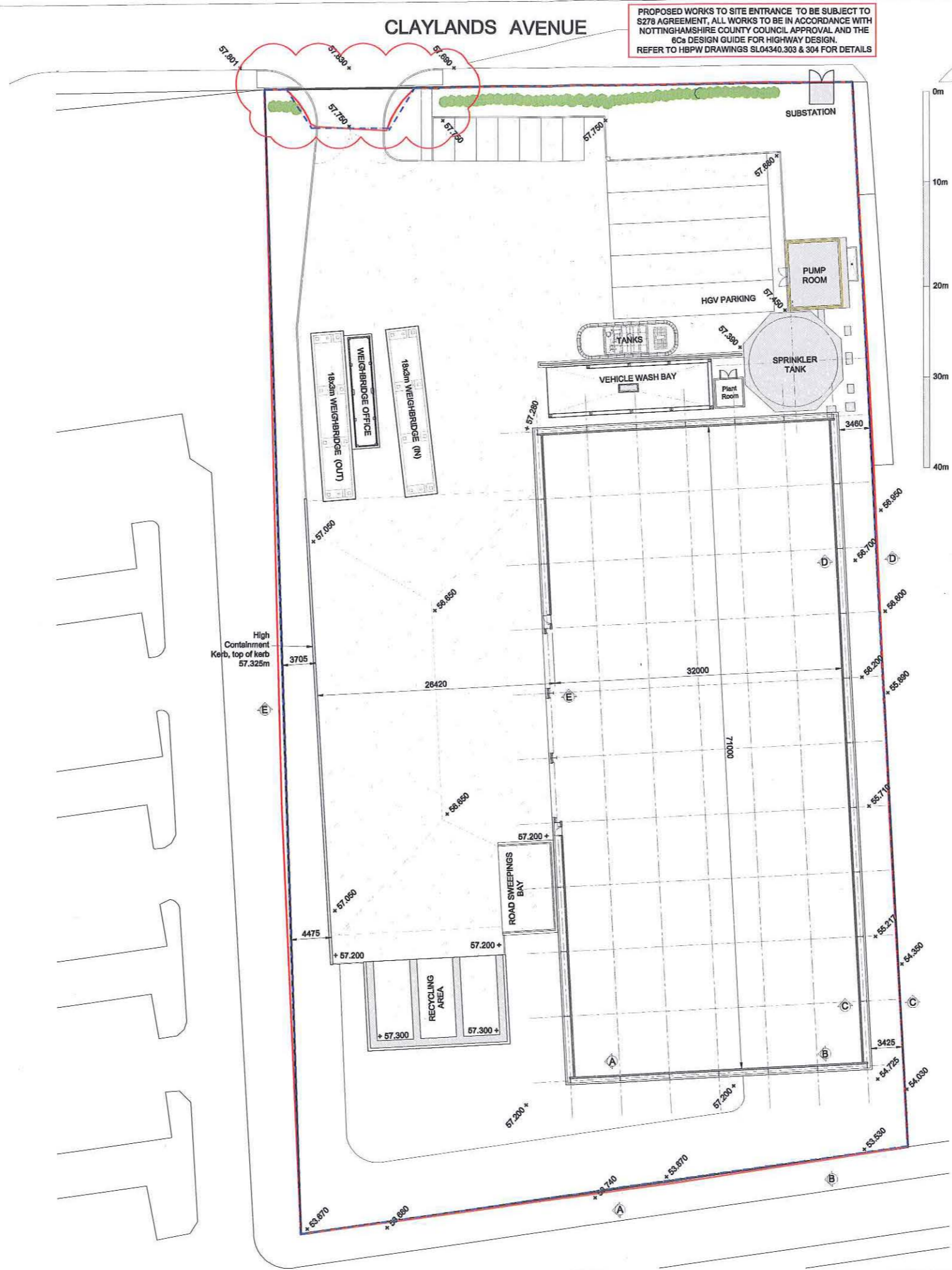
PROJECT
VEOLIA WORKSOP
NAME : VEOLIA, WORKSOP
LOCATION : DUKERIES HOUSE, CLAYLANDS AVE

DRAWING TITLE
PROPOSED SITE LAYOUT

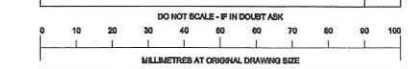
DRAWN	EP	DATE	AUGUST 2014
PROJECT ENGINEER	EP	SCALE	AS SHOWN @ A1
CHECKED	PM	DRAWING NUMBER	SL04340.300
APPROVED	PW	REVISION	I

CLAYLANDS AVENUE

PROPOSED WORKS TO SITE ENTRANCE TO BE SUBJECT TO S278 AGREEMENT, ALL WORKS TO BE IN ACCORDANCE WITH NOTTINGHAMSHIRE COUNTY COUNCIL APPROVAL AND THE 6c DESIGN GUIDE FOR HIGHWAY DESIGN. REFER TO HBPW DRAWINGS SL04340.303 & 304 FOR DETAILS



PROPOSED SITE PLAN
(SCALE 1:250)



- DO NOT SCALE
- This drawing is to be read in conjunction with all other relevant drawings.
- Should there be any conflict between the details indicated on this drawing and those indicated on other drawings the Engineer should be informed PRIOR to construction on site.
- Until technical approval has been obtained from the relevant Authority, it should be understood that all drawings and details issued are PRELIMINARY and NOT FOR CONSTRUCTION. Should the contractor commence site work prior to approval being given, it is entirely at his own risk.
- All dimensions are in millimetres unless otherwise stated.
- It is the responsibility of the contractor to execute the works at all times in strict accordance with the requirements of the Health And Safety At Work Act 1974 and CDM regulations 2007. The contractor will be deemed to have allowed for full compliance, including full liaison with the CDM co-ordinator, within his rates.

It is assumed that all works will be carried out by a competent contractor working, where appropriate, to an approved method statement

DESCRIPTION	REV	DATE	BY	CHKD	APPR
Weightbridge setting out updated, Vehicle wash adjusted	I	23.01.15	GS	EP	PW
Site Layout Adjusted, Tank Island adjusted	H	12.01.15	GS	EP	PW
Position and size of sprayer tank, pump room confirmed	G	08.01.15	GS	EP	PW
Vehicle wash bay updated and boundary substation added	F	10.11.14	GS	EP	PW
Section E-E, weightbridge relocated & Levels updated	E	28.09.14	GS	EP	PW
Triet kerb & Section E-E added	D	18.09.14	GS	EP	PW
Additional proposed levels added, width of path increased	C	18.09.14	GS	EP	PW
Additional proposed levels added, width of path increased	B	18.09.14	GS	EP	PW
Additional levels added, building rotated on plan	A	27.03.14	EP	PW	EP
Note added showing extent of Highway works					

HBPW LLP
 Civil & Structural Engineering Services
 43 Bridgegate
 Retford
 Nottinghamshire
 DN22 7UX
 Tel: (01777) 868896
 Fax: (01777) 862491

STATUS APPROVAL

CLIENT **VEOLIA ENVIRONMENTAL SERVICES**

CONTRACTOR **Clugston**

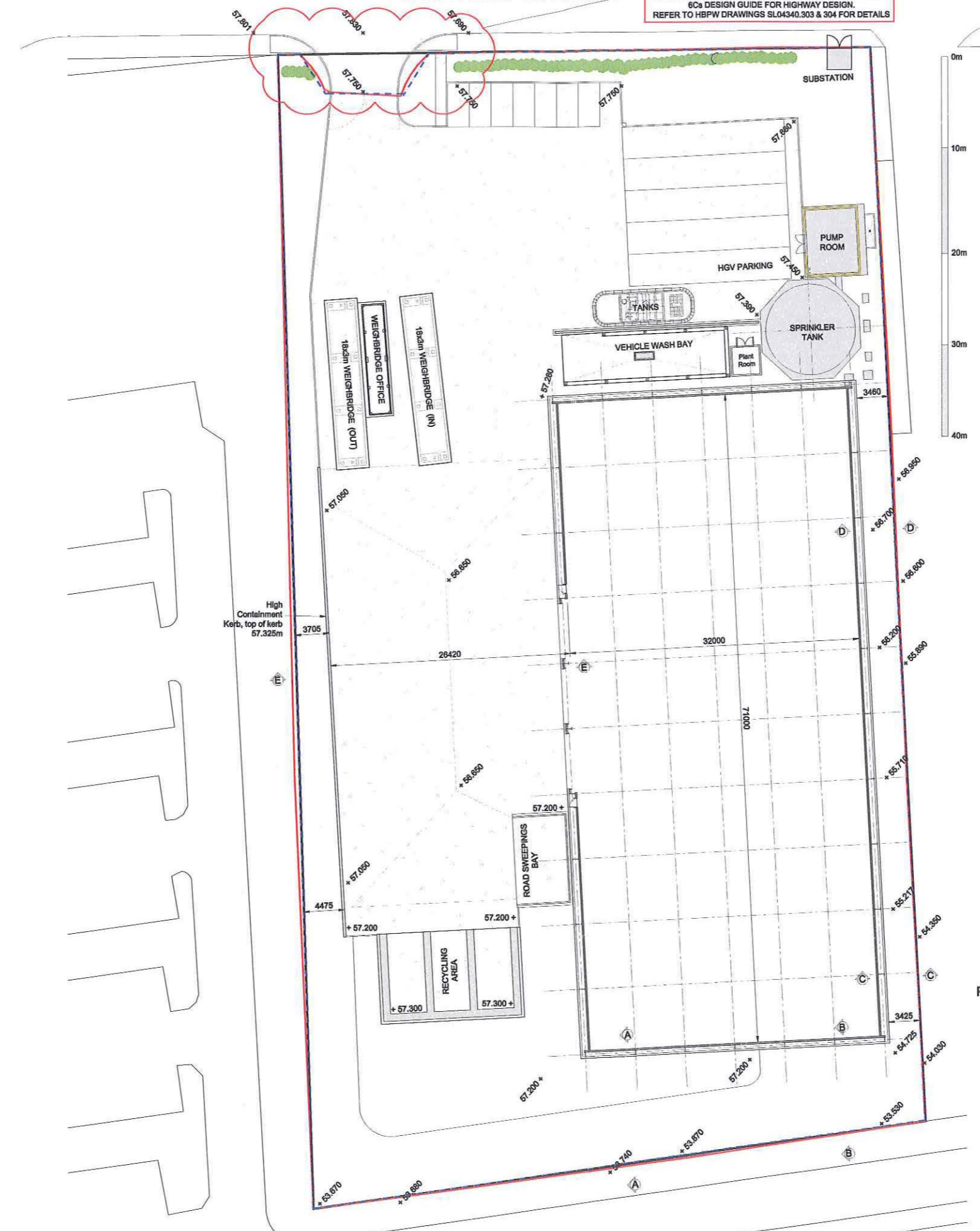
PROJECT **VEOLIA WORKSOP**
 NAME : VEOLIA, WORKSOP
 LOCATION : DUKERIES HOUSE, CLAYLANDS AVE

DRAWING TITLE
 PROPOSED SITE LAYOUT

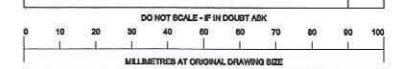
DRAWN	EP	DATE	AUGUST 2014
PROJECT ENGINEER	EP	SCALE	AS SHOWN @ A1
CHECKED	PM	DRAWING NUMBER	SL04340.300
APPROVED	PW	REVISION	I

CLAYLANDS AVENUE

PROPOSED WORKS TO SITE ENTRANCE TO BE SUBJECT TO S278 AGREEMENT, ALL WORKS TO BE IN ACCORDANCE WITH NOTTINGHAMSHIRE COUNTY COUNCIL APPROVAL AND THE 60s DESIGN GUIDE FOR HIGHWAY DESIGN. REFER TO HBPW DRAWINGS SL04340.303 & 304 FOR DETAILS

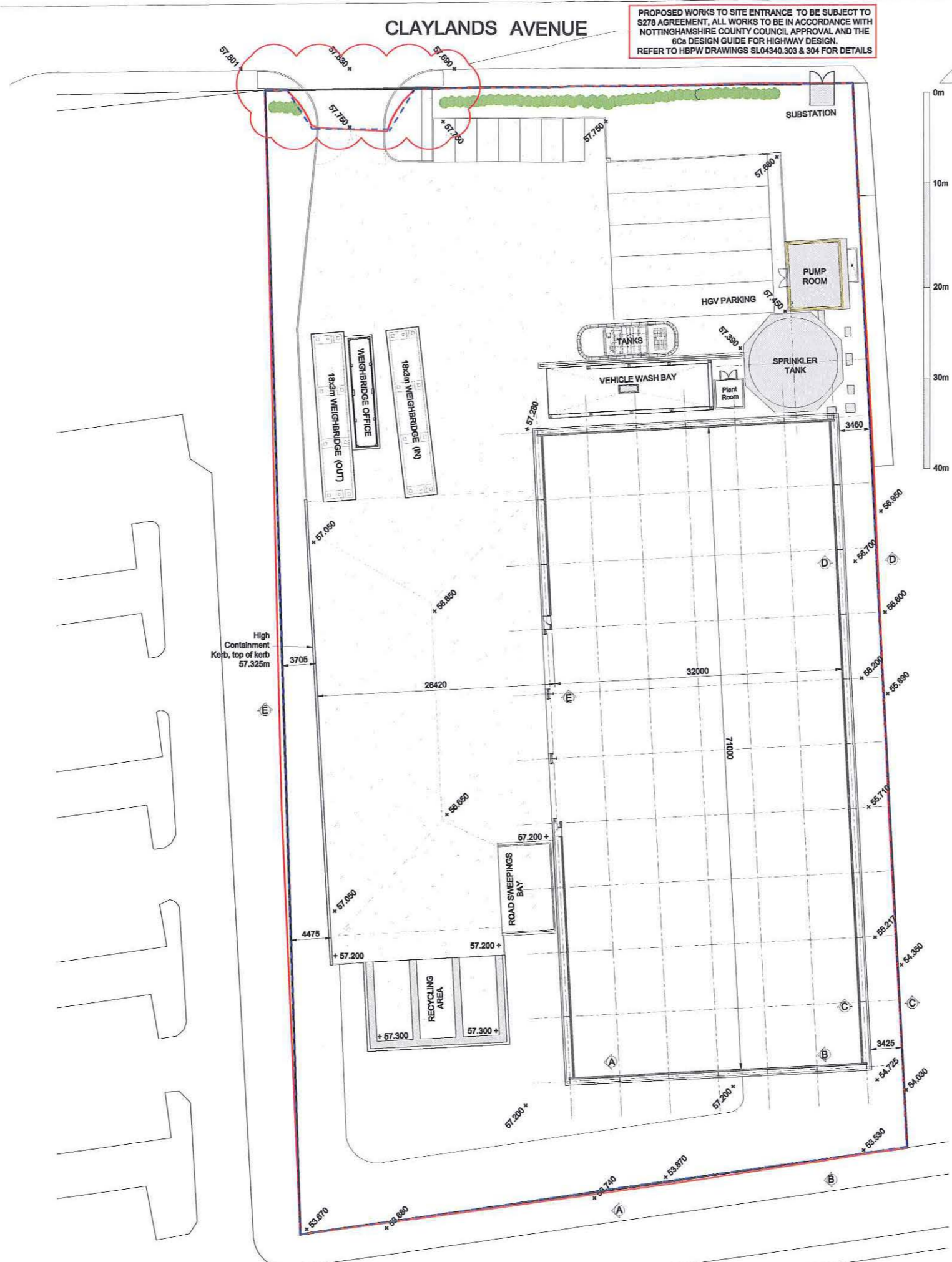


PROPOSED SITE PLAN (SCALE 1:250)



- DO NOT SCALE
- This drawing is to be read in conjunction with all other relevant drawings.
- Should there be any conflict between the details indicated on this drawing and those indicated on other drawings the Engineer should be informed PRIOR to construction on site.
- Until technical approval has been obtained from the relevant Authority, it should be understood that all drawings and details issued are PRELIMINARY and NOT FOR CONSTRUCTION. Should the contractor commence site work prior to approval being given, it is entirely at his own risk.
- All dimensions are in millimetres unless otherwise stated.
- It is the responsibility of the contractor to execute the works at all times in strict accordance with the requirements of the Health And Safety At Work Act 1974 and CDM regulations 2007. The contractor will be deemed to have allowed for full compliance, including full liaison with the CDM co-ordinator, within his rates.

PROPOSED WORKS TO SITE ENTRANCE TO BE SUBJECT TO S278 AGREEMENT. ALL WORKS TO BE IN ACCORDANCE WITH NOTTINGHAMSHIRE COUNTY COUNCIL APPROVAL AND THE 6C DESIGN GUIDE FOR HIGHWAY DESIGN. REFER TO HBPW DRAWINGS SL04340.303 & 304 FOR DETAILS



PROPOSED SITE PLAN (SCALE 1:250)

It is assumed that all works will be carried out by a competent contractor working, where appropriate, to an approved method statement

DESCRIPTION	REV	DATE	BY	CHKD	APPR
Weightbridge setting out updated, Vehicle wash adjusted	I	23.01.15	BS	EP	PW
Site Layout Adjusted, Tank Island adjusted	H	12.01.15	BS	EP	PW
Position and size of apron tank, pump room confirmed	G	08.01.15	BS	EP	PW
Vehicle wash bay updated and boundary substation added	F	10.11.14	BS	EP	PW
Section E-E, weighbridge relocated & Levels updated	E	28.06.14	BS	EP	PW
Tier kerb & Section E-E added	D	18.09.14	BS	EP	PW
Additional proposed levels added, width of path increased	C	18.09.14	BS	EP	PW
Additional proposed levels added, width of path increased	B	18.09.14	BS	EP	PW
Additional levels added, building rotated on plan	A	27.03.14	EP	PW	EP
Note added showing extent of Highway works					

HBPW 43 Bridgegate
 fieldford
 Nottinghamshire
 DN22 7UX
LLP
 Civil & Structural Engineering Services
 Tel: (01777) 869856
 Fax: (01777) 862491

STATUS APPROVAL

CLIENT **VEOLIA ENVIRONMENTAL SERVICES**

CONTRACTOR **Clugston**

PROJECT **VEOLIA WORKSOP**
 NAME : VEOLIA, WORKSOP
 LOCATION : DUKERIES HOUSE, CLAYLANDS AVE

DRAWING TITLE
 PROPOSED SITE LAYOUT

DRAWN EP	DATE
PROJECT ENGINEER EP	AUGUST 2014
CHECKED PM	SCALE
APPROVED PW	AS SHOWN @ A1
DRAWING NUMBER SL04340.300	REVISION I